

STORY OF THE STEVENS PISTOL

By Cecil C. Kyser



CECIL C. KYSER

President Frost, fellow members of the American Society, I am highly honored to have the opportunity to talk to you about my collection of Stevens Pistols.

The Stevens Company was established in the year 1864 and it was taken over by Savage Firearms in the late 1920's or early 1930's.

Stevens rifles and pistols held world records up into the early 1900's. My interest in Stevens pistols began in the early 20's when I traded a young fellow out of a pistol to use on a trap line — as I grew older, I still was fascinated by the accuracy and durability of this type gun.

The Stevens Company, at the height of production, had two factories, one the River Plant and the other the Hill Plant. Their earliest model was the Vest Pocket model, a small Derringer type pistol, similar to the Remington Derringer. The company quickly branched out into rifles of the same general design and function.

The prime aim of the Stevens Company seemed to always be accuracy of their product (a trait that does not always seem to be so prevalent today). At the same time their company was producing firearms, they were also manufacturing precision tools and later went into the manufacture of automobiles, namely, the Stevens Duryea, which the antique car buffs are searching for today —

The number of different pistol models produced by Stevens has always been a subject of debate in the gun fraternity. Like all firearms manufacturers of the period, Stevens would make any special order, as I will show you later. As I have stated, the earliest model produced was a Derringer type pistol — the next pistol of interest was known as the Stevens Gem, which was also a Derringer type, but the production of this pistol was short lived. This brings us up to the Golden Age of Stevens — the full line carried in the late 1800's was as follows: In catalog #11, these guns are listed in this manner — the Lord model, the Conlin model and the Gould model. The Lord model was a heavy gun with an elongated grip designed for target shooting — the accuracy of this model was highly regarded and many world records were established with this pistol—

The Conlin model was quite similar to the Lord model, with the exception that it had a shorter grip, for smaller hands—

The Gould model was similar to the Conlin model, with this exception — it did not have the spur on the trigger.

The Lord model was produced in 8", 10", and 12" length barrels; the sights were many different types, the best was adjustable to windage and elevation by micrometer type screws.

The fact that Stevens believed that accuracy could only be had by a shell being in the chamber of a barrel was the main reason these guns would shoot all day in the same hole, if the shooter was man enough to hold the gun there —

To prove the high regard of the accuracy of these pistols, there are many testimonials in the various catalogs by such people as Ira Paine, John W. Pope, Annie Oakley and by most of the famous target shooters of that period— Stevens also manufactured a gun which they called the Model 39, chambered for calibers such as 38-55, 38-45, 44-50, 44-65 and 44 Shot in 15" and 18" BBLs. Next in production was the new Pocket or Bicycle Model #40 which had a detachable stock — this gun was only manufactured in 22 caliber. This model was followed by the Vernier Model #40-1/2 which had a vernier sight on the shoulder of the grip, for better accuracy. The next model was known as Model 41, which was a tip up with only a 3-1/2" bbl., also very accurate for such a small pistol. Model 42 was the next small pistol produced; this pistol had a detachable stock and was a very light gun.

Last in this series was the Diamond Model #43- this model had many variations which I will show you, from the earliest to the latest-

There have also been many Cased pistols come to light- The Stevens Company listed cases for certain types of pistols- However none were of the type as, say, Colt or other "name brands"- None of the Cased Pistols which I have seen have had the Stevens factory label in the case.

As I have said, I will now show you some of the Stevens pistols from my collection, which I consider most interesting- I will be more than glad to answer any questions you might wish to ask-

I would especially like to call your attention to a leather cased pistol with Shoulder Stock and Telescope sight, from Stevens by Special Order and was in the same family until I bought it from the Estate-

Following is a detailed description of some of the representative firearms produced by Stevens in the late 1800's from early 1900's-

Stevens #35 "Off Hand Target"

Round BBL with Octagon Breech - Frame Nickel Plated- Wide Butt - Ammo 22 LR Sights, Sporting Rear-Bead Front
Weight- 6"-1 lb-6oz.
8"-1 lb-8oz.
10"-1 lb-10oz.

Lord Model - #36

Round BBL-Octagon Breech- Standard length- 10" Frame Nickel Plated - Ammo 22LR - Made to order for 22-7-45 RF- 32 long RF- 38 Long Colt Sights Sporting rear Bead Front
Weight- 10"- 2-1/4 Lb.
Stocks finely checkered

Gould Model #37

Half Octagon BBL- Blue- 10" Frame- Nickel Plated- Wide Butt Stocks- Walnut- Finely Checkered Cal. 22LR- 25 Stevens RF Sights Sporting Rear- Bead Front
Weight- 10" BBL- 1-1/2 LB.
12" BBL- 2-1/2 LB.

Conlin Model #38

Half Octagon BBL- Blue- Frame Nickel Plated- Spur Guard- Wide Butt Cal. 22- Same on Special Order Sights- Sporting Rear- Bead Front
Weight- 10" BBL- 1-1/2 LB.
12" BBL- 2-1/2 LB.

Shotgun-New Model- Pocket #39

Part round and part octagon BBL- Smooth bore- Frame Nickel Plated- with Detachable stock Cal. 38-55 to 44 Everlasting Sights- regular shotgun bead
Weight- 15" BBL- 2-1/2 LB.

Rifles- New Model Pocket or Bicycle #40

Part round and part octagon BBL. Frame Nickel Plated Stock Black Walnut with detachable stock Cal. 22LR-25 Stevens RF- 32 Long RF

Rifles-Vernier New Model #40-1/2

Same as Model 40 except has Vernier Rear Peep Sight-



TOP - FIRST MODEL STEVENS S.S. 32 RF, SERIAL #818. MIDDLE - STEVENS "GEM," .25 CAL. #3830. BOTTOM - STANDARD PRODUCTION MODEL

STEVENS CATALOGUE 1877

FEBRUARY 1ST, 1877.

J. STEVENS & COMPANY'S

DESCRIPTIVE CIRCULAR

AND

PRICE LIST

OF THEIR

NEW DOUBLE BARREL

Breech-Loading Shot Guns.

ALSO

SINGLE SHOT GUNS,

With (optional) Taper and Laminated Barrel Systems.

Single Guns with plain Barrels,

SPORTING RIFLES,

HUNTERS' PET RIFLES,

NEW MODEL POCKET RIFLES,

NEW MODEL POCKET SHOT GUNS,

OLD MODEL POCKET RIFLES,

AND POCKET PISTOLS

CHICOPEE FALLS, MASS., U. S. A.

Can. W. 3000 - Co. Prices Specified Else.

Hunters' Pet.
July 1, 1875.

Shot Guns.

Breech-Loading

Descriptive Circular and Retail Price List
J. STEVENS & CO'S
POPULAR AND WELL KNOWN
Patent Breech-Loading Fire Arms,
CHICOPEE FALLS, MASS., U. S. A.

Sent by Express to all parts of the World, on Receipt of Price.



Old Model Pocket Rifle.

Breech-Loading

Pocket Rifles

REMARKABLE little Firearms—a "Breech-loading Pocket Rifle"—weight only eleven ounces, yet shoots with great accuracy and power from 20 to 100 yards or more. Can be loaded and fired five times in succession—be carried in a wide pocket while working in the field, ready to bring down game at short notice. Remarkably convenient in new countries as a substitute weapon, or for picking off game, and useful generally upon the farm where wild animals, large or small, are common.

A Beautiful Little Piece for Amusement in Target Practice.

DESCRIPTIVE CATALOGUE AND PRICE LIST

After three years' sale of the Pocket Rifle, the repeated calls from sportsmen and others, for a heavy one with larger calibre of the same general style, induced the Publishers in 1875 to bring out a "Haw-Moose" Pocket Rifle, much larger and heavier than the old one, with longer range.

OLD MODEL.	
Weight of 20-inch, 11 ounces.	
Pocket Rifle, 10 inch Barrel, Rosewood Stock, Nickel Plated, Shoulder Rest and Frame, 22 calibre.	\$12 00
Pocket Rifle, 10 inch, Japanese Barre, 22 Calibre.	11 00
Pocket Rifle, 8 inch, Plated Steel, 22 Calibre.	11 00
Pocket Rifle, 8 inch, Japanese Barre, 22 Calibre.	10 00
Pocket Rifle, 4 inch, no Rest, 22 Calibre.	7 00
Extra length barrels for Pocket Rifles, per inch extra.	3 00
Mahogany Case for Pocket Rifle, 10 inch barrel, old model.	2 00

NEW MODEL.	
Weight of 20-inch, 3 pounds.	
We have added to this Rifle a firing pin same as Sporting Rifle Target Pistol, now made, very few heavy barrels.	
10 inch Barrel, 22 and 22 Calibre, Nickel Plated Rest, 12 inches in length.	\$15 00
12 inch Barrel, 22 and 22 Calibre, Nickel Plated Rest, 14 inches in length.	11 00
14 inch Barrel, 22 and 22 Calibre, Nickel Plated Rest, 16 inches in length.	10 00
16 inch Barrel, 22 and 22 Calibre, Nickel Plated Rest, 18 inches in length.	9 00
Mahogany Case, for 10 inch Barrel.	2 00
Mahogany Case, for 12 inch Barrel.	3 00
Mahogany Case, for 14 inch Barrel.	4 00
Barrels 22 or 22 100 Calibre, full sighted, 10 inches in length.	5 00
12 inches in length.	7 00
14 inches in length.	8 00
16 inches in length.	10 00

10 inch Barrel, 22 and 22 Calibre, Nickel Plated Rest, 12 inches in length.	\$15 00
12 inch Barrel, 22 and 22 Calibre, Nickel Plated Rest, 14 inches in length.	11 00
14 inch Barrel, 22 and 22 Calibre, Nickel Plated Rest, 16 inches in length.	10 00
16 inch Barrel, 22 and 22 Calibre, Nickel Plated Rest, 18 inches in length.	9 00
Mahogany Case, for 10 inch Barrel.	2 00
Mahogany Case, for 12 inch Barrel.	3 00
Mahogany Case, for 14 inch Barrel.	4 00
Barrels 22 or 22 100 Calibre, full sighted, 10 inches in length.	5 00
12 inches in length.	7 00
14 inches in length.	8 00
16 inches in length.	10 00

OLD MODEL POCKET RIFLES.		NEW POCKET RIFLES.	
Pocket Pistol, old model, 8 1/2 inch Barrel, 22 and 20 Calibre.	\$8 00	Pocket Pistol, 8 inch Barrel, 22 and 20 Calibre.	8 00
Old Pocket Pistol, 8 inch Barrel, 22 and 20 Calibre.	8 00	Old Pocket Pistol, 22 and 20 Calibre.	8 00
Barrel for Old Model Pocket Rifle.	5 00		

DESCRIPTIVE CATALOGUE AND PRICE LIST



No. 1 shows the Rifle complete. No. 2 shows the Rifle in position for loading. No. 3 full size Cartridge for 40-100 bag.

Sporting Rifle.

THE present rifle was the result of the Publisher's desire to sportmen and others desiring a full sized Rifle with the accuracy and impregnability of our Pocket Rifle. We induced to its construction for the season of 1875, a new and elegant Sporting Rifle, with an Octagon barrel three twenty four to thirty six inches long, with a Nickel Plated gun metal Stock and trimmings. It has a fine Cast Steel Lock, and is made to work as delicately as a hair trigger. For quality of workmanship and beauty of finish, or in accuracy shooting, it is not surpassed. It shoots regular sizes of Smith & Wesson's Patent Cartridges, calibres 22 100, 22 R.C., 28-100 and 44-100. Weight 5 1/2 pounds with 24 inch barrel; or heavy barrel stock, 8 pounds.

Those who have used our Pocket Rifle will find in these Rifles their reputation fully sustained. Orders are referred to the rest of targets made with the Pocket Rifle as an indication of what can be done with them.

PRICES	
Rifle, Nickel Plated Frame, 24 or 28-inch Barrel.	\$40 00
Every additional inch of Barrel, extra.	10 00
Extra Heavy Stock, (additional).	10 00

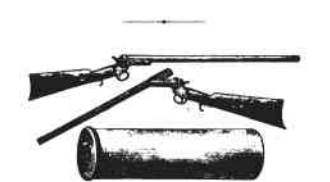
DESCRIPTIVE CATALOGUE AND PRICE LIST



Hunters' Pet.

THIS is a Rifle with Octagon Breech similar to No. 17, but with a full sized 18 inch Rifle Barrel, and the Stock and Breech Rest made strong in proportion to the barrel, adapted for long cartridges, 22, 30 or 41 calibre, with lock, firing pin and barrel same as in their Sporting Rifle. Suitable for large game at long range.

PRICES	
Nickel Plated Frame, Combined Sight.	\$22 00
Other lengths of Barrels, made on special orders, per inch.	2 00



Breech-Loading Shot Guns.

WE are now making a new SINGLE BARREL BREECH-LOADING SHOT GUN, as shown in the cut, operating on the same plan as our Sporting Rifle. They are made of good materials and workmanship, and for strength and accuracy are unsurpassed. The patent Trigger Central Fire Box Shell, 14 @ gauge (same size as Day's Paper Shell) is recommended in the cut, and is discharged and retained with ordinary ease in successive use number of times without special tools, and therefore meets every requirement of SPORTSMAN AND SPORTSWOMAN.

Orange Paper Shell may also be used at pleasure.

*Low price of Rifle Rifle to go with this gun. Page 6.

DESCRIPTIVE CATALOGUE AND PRICE LIST

To obtain the best results in shooting with this, or, in fact, with any kind of Breech-Loading Rifle, a shell bar or bit and 2-1/2 inch thick should be used over the powder, in absence of which use two sheets of paper made.

The extremely low price at which this gun is offered, places it within the reach of all, as it is the cheapest Breech-Loading Rifle Gun in the World!

PRICES	
Plain Old Walnut Stock, Improved Frame, 28 to 32-inch barrel.	\$17 00
Plain Old Walnut Stock, Nickel Plated Frame, 28 to 32-inch barrel.	18 00
Variable Stock, Nickel Plated Frame, 28 to 32-inch barrel.	18 00
Brass Shell, 14 Gauge, each.	25
Day's Paper Shell, each.	25
Wads, per box, (250 U. M. Cap. Co's.) No. 15.	25
Caps, per box, (250 U. M. Cap. Co's.) No. 15.	25

A proper charge for the Gun is from 2 to 2 1/2 ounces of powder and 1 to 1 1/2 oz. shot. Use no powder finer than DuPont's No. 1 Shot, unless preferred.



Center Fire Rifle and Loaded Shell.

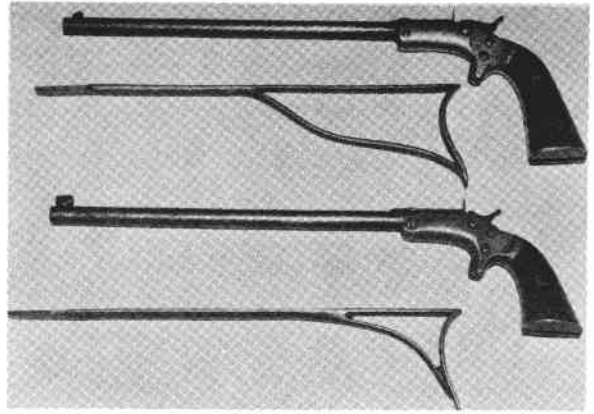
IN addition to our list of Breech-Loading Fire Arms we present for the first time our Sporting Rifle with Center Fire Breech and interchangeable Box Shell. The cover of this gun has a groove adapted to all possible wads and is a reasonable cost. The Rifle Shell are 14 and 44-100 calibre. Can be used as many times as desired, each shell being good for many hundred discharges, and at the trifling cost of powder and lead, a rifle may be long sufficient to prepare oneself for a day's sporting. The same advantages are found in the following Box Shot Rifle, see page 6.

We use the Smith's combined Rifle and Shot Gun to see the Union Metallic Center Fire Breech Cartridge, 28 and 44-100 calibre. Long or extra long.

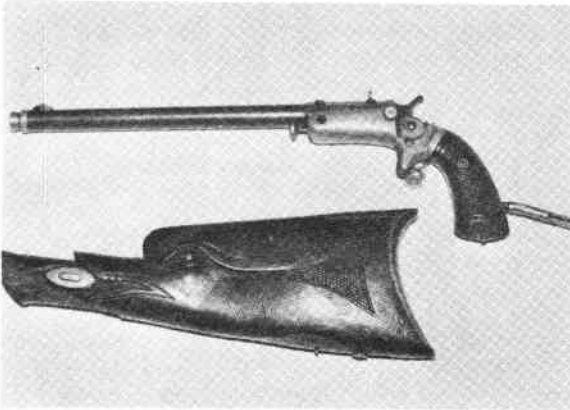
FROM KYSER COLLECTION



TOP - "GOULD" MODEL, .22 CAL #20170 SECOND - "TIFFANY" ENGRAVED "GOULD" MODEL, .22 CAL., #11510. THIRD - "CONLIN" MODEL, .22 CAL. #8841. FOURTH - "LORD" MODEL, 122 CAL. #1564



TOP - STEVENS "RELIABLE" MODEL, #42 BOTTOM - STANDARD PRODUCTION MODEL, BOTH PISTOLS .22 CAL.



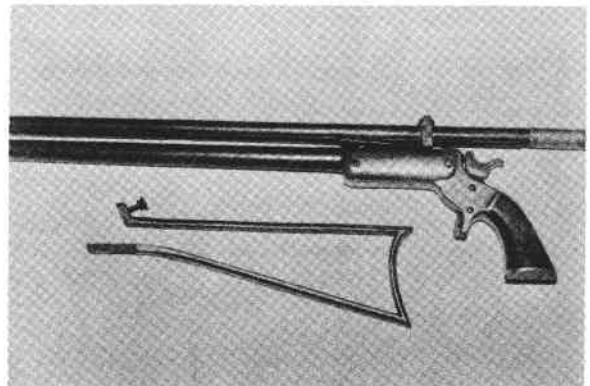
SPECIAL ORDER STEVENS 22 CAL. "HAND EJECTOR" #492 WITH FANCY HAND CARVED STOCK WITH DOLPHIN'S HEAD.



CASED "BICYCLE MODEL," WITH STEVENS SCOPE, 122 CAL. 324617



STEVENS "VERNIER" MODEL #14307, .22 CAL., 18" BARREL, VERNIER SIGHT ON GRIP.



STEVENS "NEW MODEL," .32 LONG RF #284, WITH MALCOMSON SCOPE. ALL PISTOLS MADE IN THE TWO PLANTS AT CHICOPEE FALLS, MASS.

Pistol Model Tip Up- #41

Part round, part octagon BBL
Frame Nickel Plated
Stock plain walnut
Cal. 22 Short RF
Sights open
Weight- 7 oz.

Rifle Model Reliable Pocket #42

Part round and part octagon BBL
Frame Nickel Plated
Stock plain with detachable skeleton rest
Cal. 22 LR-RF
Sights Globe Front-Rear Peep
Weight- 1 LB.

Pistol Model Diamond #43

Part round, part octagon BBL
Frame Nickel Plated
Stock- Long plain- walnut grip
Cal. 22LR RF
Sights- Globe Front- Rear Peep
Weight- 6" BBL- 10 oz.
10" BBL- 12 oz.