



The gun was later seized from the safe house for Fred "Killer" Burke by the Berrien County Sheriff's Department, Michigan on December of 1929. The Thompson was turned over to Dr. Goddard and forensically proven to have been used in the St. Valentine's Day Massacre. The serial number

was raised by acid by Dr. Goddard and the number restamped, which explains the finish on the firearm. Dr. Goddard and the Corner's Jury are shown with this gun in the photographs used in this exhibit. The Thompson is now in the custody of the Berrien County Sheriff's Department.

Comparisons of the Shell Casings from the St. Valentine's Day Thompsons

Serial Number 2347

Serial Number 7580

Firing Pin Marks on Shell Primers



Plate 15. Firing pin imprint with elevation at base of crater, left on shell fired in 2nd Thompson gun.



Plate 14. Smooth concave firing pin imprint left in primer of shell fired in first Thompson gun.

Ejector Marks on Cartridges



Plate 12. Mark left on shell rim by ejector of first Thompson gun. Note parallel lines duplicating those present on ejector in Plate 11.

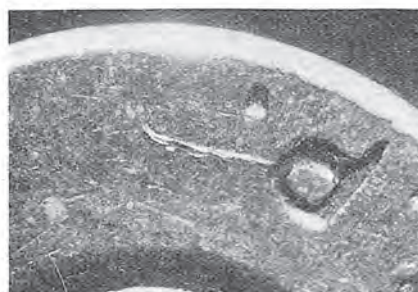


Plate 13. Ejector mark on rim of shell fired in second Thompson gun. Note marked difference between this and ejector mark shown in Plate 12.