





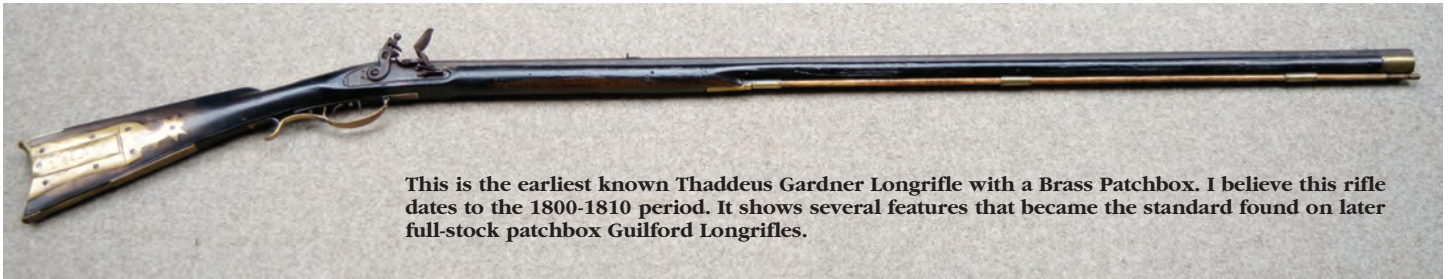








**THADDEUS GARDNER LONGRIFLE #1**



This is the earliest known Thaddeus Gardner Longrifle with a Brass Patchbox. I believe this rifle dates to the 1800-1810 period. It shows several features that became the standard found on later full-stock patchbox Guilford Longrifles.

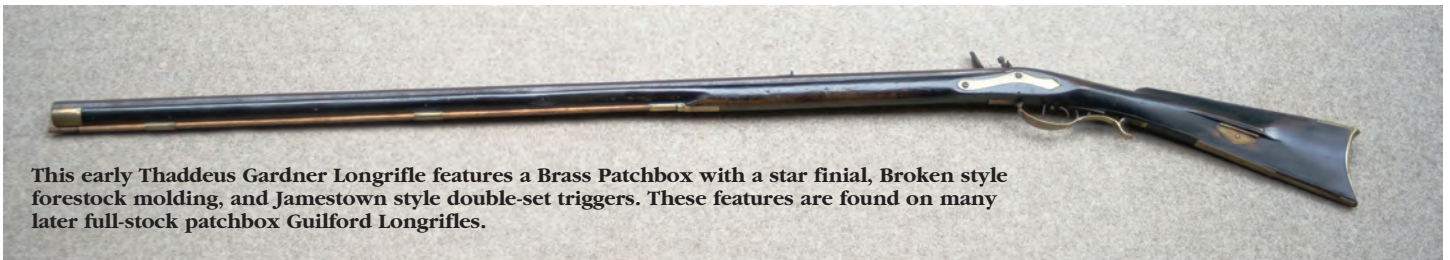


This is an early example of what became the Guilford "Twisted Star" or "Daisy" style Brass Patchbox.



Check Rest with Pick Holder & early two screw side-plate.

**THADDEUS GARDNER LONGRIFLE #1**



This early Thaddeus Gardner Longrifle features a Brass Patchbox with a star finial, Broken style forestock molding, and Jamestown style double-set triggers. These features are found on many later full-stock patchbox Guilford Longrifles.



Thaddeus Gardner's Stamp Signature on barrel.



This is the earliest example I have seen of Guilford Broken-style forestock molding which starts and stops on either side of the thimble. On many later full-stock patchbox rifles the Broken-style molding stops and starts on either side of a silver inlay, usually in the shape of a diamond.